



Notice to Mariners

Vessel: MV Proteus

Date: 08/07/2019

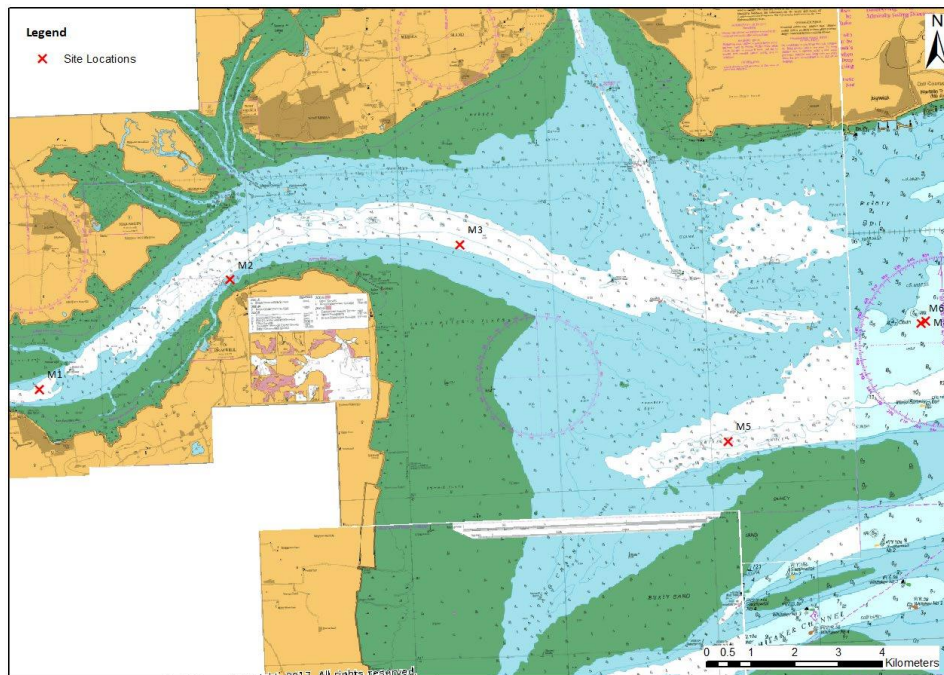
Issue No: 01

Notice to Mariners

Hydrographic & Geophysical Survey Operations

Please be advised that Bibby HydroMap Limited. will be carrying out hydrographic & geophysical survey operations in the River Blackwater Approaches:

Overview of Survey Area

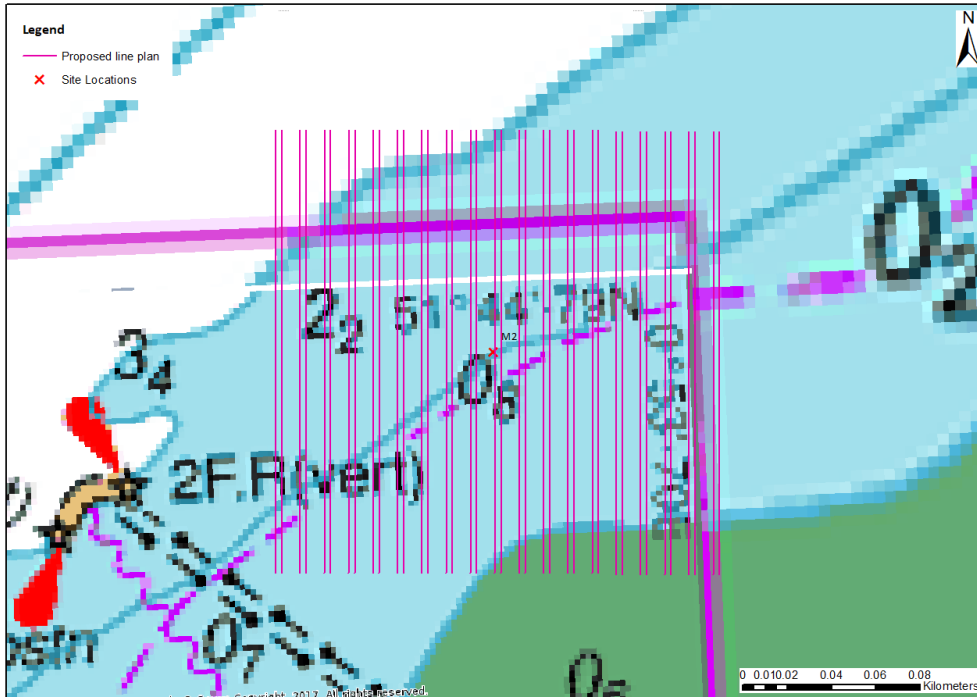


Survey Operations are anticipated to commence on 15th July 2019 weather permitting. The expected duration is **13** days. Survey operations will be undertaken using survey vessel Proteus.

The survey area composes of 6 boxes in the River Blackwater Approaches.

The location of these are as follows:

Site	Lat	Long
M1	1;52;14.012 N	3;51;27.604 E
M2	1;53;35.226 N	3;53;48.209 E
M3	1;54;01.025 N	3;56;37.366 E
M4	1;53;04.197 N	4;02;20.499 E
M5	1;51;35.022 N	3;59;55.132 E
M6	1;53;02.766 N	4;02;17.197 E



Each of the 6 areas will cover an area of 200m plus approx. 500m for line turns due to the towed equipment.

MV Proteus Details



MV Proteus is a 14m x 5m GRP catamaran hull design coastal survey vessel. The lower sections of the hull and dark blue and the upper sections and wheelhouse are white, with 'SURVEY' lettering in white on both sides of the vessels hull. The vessel will operate on a 12hr basis and will display appropriate day shapes & lights during survey operations. The vessel actively transmit an AIS signal.

Survey operations will involve towing survey equipment on and below the water surface, up to 300m behind the vessel. A wide berth is requested at all times as the vessel will be restricted in her ability to manoeuvre. Survey speed will generally be around 4 knots.

Contact Details	
MV Proteus, Call Sign	2HBL7
Project Manager	John Sadler John.sadler@bibbyhydromap.com
Company Details	Bibby Hydromap Limited. 4 Brunel Road, Croft Business Park Bromborough, Wirral, CH62 3NY T: 0151 328 1120